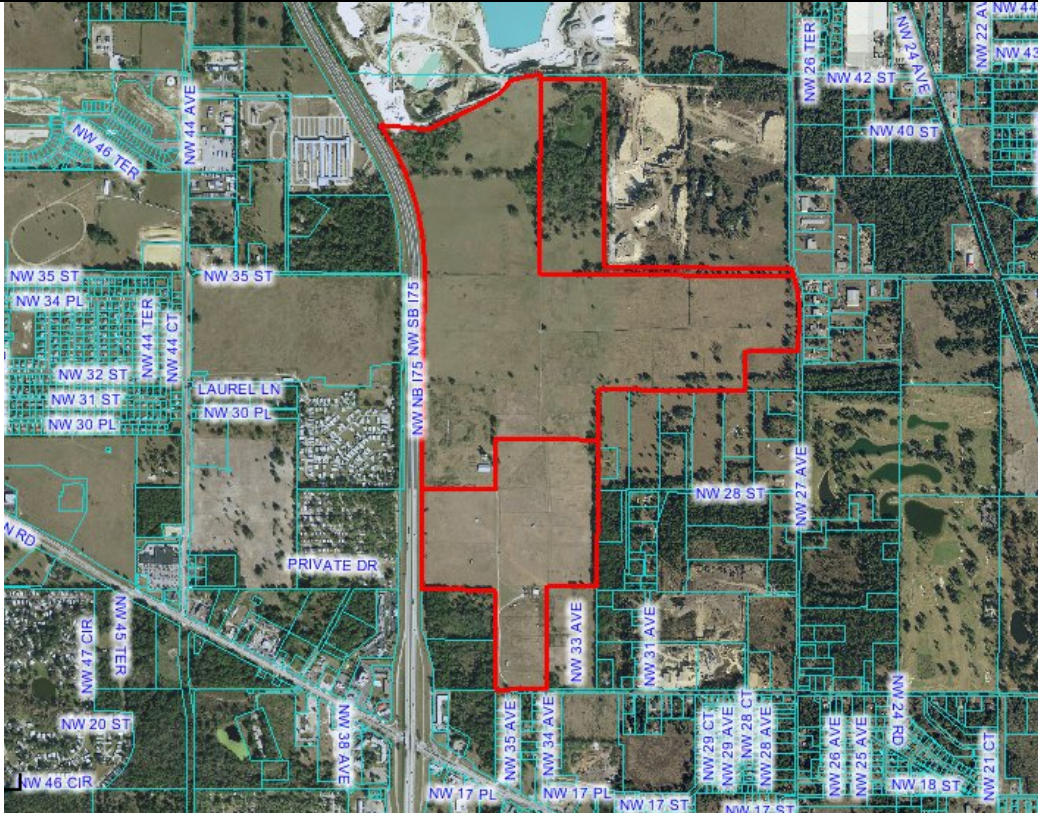


Proposed Magna Business Park  
I-75 & US 27



Enterprise Zone:	Yes
Other Location Incentives:	Yes
Ground:	This is a planned mixed-use business and industrial park is located in the NE corner of the intersection of US 27 and I-75; it encompasses about 433 acres along northbound I-75 and another 244 surrounding acres;
Number of Available Buildings:	0
Roads within park:	N/A
Major Highways/Distance:	US 27, I-75, and W 27 <sup>th</sup> Avenue less than a mile
Rail access:	None
Airport Access:	Via I-75 to SR 40 (approximately 2.5 miles) Orlando, Jacksonville and Tampa less than 90 minutes away.
Water:	Ocala Utilities
Power Company:	Ocala Utilities
Gas Company:	
Dimensions:	irregular

Parking:	N/A
Liquid Storage Facilities:	N/A
Zoning:	M-1, M-2
Taxes:	N/A
Possible Financing:	N/A
Previous Use:	N/A
Miscellaneous:	This land has been reviewed and optimized for site readiness by Marion County, working in conjunction with the City of Ocala.
Inspections/Environmental	None noted